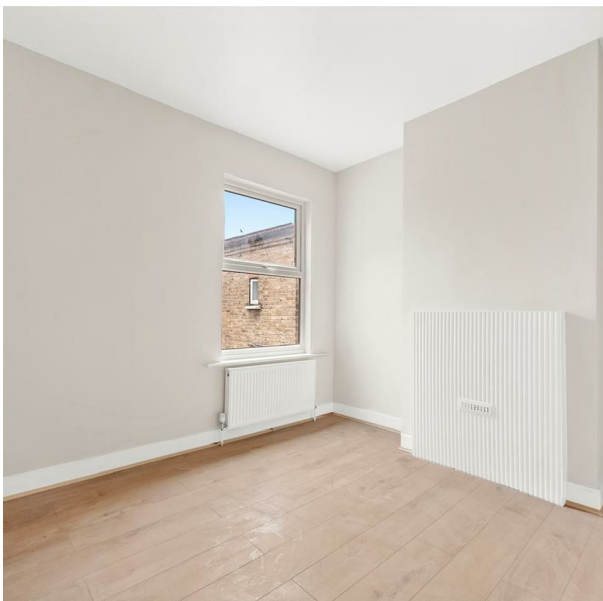


73 Morieux Road, London, E10 7LJ
£2,100 Per month
Council Tax Band: B

RELM
ESTATES



Nestled on the charming Morieux Road in London, this delightful purpose-built flat offers a perfect blend of comfort and convenience. Spanning an impressive 635 square feet, the property boasts a well-designed layout that maximises space and natural light, creating a warm and inviting atmosphere throughout.

The flat features a spacious reception room, ideal for both relaxation and entertaining guests. With two generously sized bedrooms, there is ample room for a small family or professionals seeking a comfortable living environment. The bathroom is well-appointed, ensuring that all your daily needs are met with ease.

Built in 1900, this property carries a sense of history and character, while still providing the modern amenities required for contemporary living. The abundance of natural light that floods the flat enhances its appeal, making it a bright and cheerful space to call home.

Situated in a desirable area of London, residents will enjoy easy access to local amenities, transport links, and green spaces, making it an ideal choice for those looking to embrace city life while still enjoying the tranquillity of a residential neighbourhood. This flat is a wonderful opportunity for anyone seeking a charming and well-located home in the heart of London.

RELM

ESTATES

465 Leabridge Road
Leyton
London
E10 7EA
02081 438 248
lettings@relmestates.co.uk

